



Lincoln Elementary School
831 E. 31st Street – Erie, PA

July 15-17, 2016

Project Summary

ServErie is a movement of Erie churches and organizations committed to serving those in need in our city through local social service agencies and neighborhoods. With hundreds of volunteers, ServErie has made a significant impact on our community by being the hands and feet of Christ through building relationships and spreading hope. ServErie recruits volunteer laborers and provides materials to help restore and repair social-service agencies, schools, neighborhoods, and nonprofit facilities. ServErie was founded and is managed by Grace Church.

ServErie started in 2008 with 55 volunteers on a Saturday service project. Since then, ServErie has held ServErie Saturdays four times per year and has expanded from two churches to 44 partner churches, organizations, student groups and businesses. Today, ServErie not only holds ServErie Saturdays in the city, but also in east and west Erie County. The most recent ServErie provided services to 20 local organizations in February 2016 had more than 450 volunteers from 30 local organizations.

The current project, Help Our Schools: The Lincoln School Project, was born from a desire to use the model of ServErie to bring transformational change to Erie's neediest areas. Unlike other ServErie Saturdays that reached out to a variety of organizations, this project is solely focused on Lincoln Elementary School in an effort to assist Erie's Public Schools, which is facing a serious budget crisis. After conversations with ServErie leaders and Dr. Jay Badams, superintendent of Erie's Public Schools, Lincoln Elementary School was identified as a priority as part of the EPS's optimization plan. Lincoln Elementary is a 99-year-old school that serves 500 students in pre-K to Grade 5.

More than 1,000 volunteers are expected to assist with the project over three days and multiple shifts, July 15-17, 2016. On Saturday, July 16, the Lincoln School families will participate from 10 a.m.-3 p.m. in activities that are specially designed for families to work together. Additionally, there will be a Kid's Zone and health screening provided to the community.

Goals

The primary goals of the project are:

- To assist and support Erie's Public Schools
- To build relationships and partnerships within the Erie community that unite the community
- To solve the proximity problem: Helping willing volunteers to come face to face with community needs

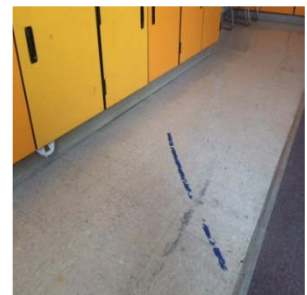


Figure 1: Cleaning of hallways, lockers and classrooms are needed.

The specific project goals which follow are projects that will be completed by the end of the weekend:

- Point west wall
- Paint 1st Floor Hall & Classrooms
- Paint 2nd Floor Halls & Classrooms
- Paint 3rd Floor Halls & Classrooms
- Paint & Repair 4 Stairwells
- Paint Entry/Murals/Additional murals as agreed
- Refinish auditorium seats and paint partial floors & entrances
- Clean and paint office, library, teachers' lunch room and conference room, replace carpeting in main office
- Clean multi-purpose/lunch room/Wash all windows indoor and out
- Replace ceiling tiles
- Power wash entrances/Paint flagpole/Weed and paint tennis court fence
- Mow all grass, edge, weed and mulch around existing landscaping & trees
- Patch sidewalk, replace some entrance aprons
- Collect school supplies for teachers and students



Figure 2: Student chairs will be repaired

Possible Additional Projects (based on time and funding):

- Teacher wish list repairs to classrooms
- Repair or replace drapes for auditorium
- Plant perennials



Figure 3: Previous water damage and chipping paint will be repaired and the interior of the hallways and classrooms will be repainted.

NOTE:

A letter from Erie's Public Schools Chief Engineer, Leroy Ganska, is found in Appendix A. This letter acknowledges that Mr. Ganska and Jim Arble, the building engineer for Lincoln Elementary School, are aware of the project and will maintain EPA, CDC and Asbestos Hazard Emergency Response Act (AHERA) requirements, standards and protocols. It is also noted that no abatement or disruption of lead-based paint or asbestos is planned.

NECESSITY OF PILOT

In the middle of the budget crises of the Commonwealth of Pennsylvania and Erie's Public Schools, physical needs of existing schools are falling by the wayside due to prioritization. In many cases, these needs have not been met because of greater priorities in the school district. One of those unmet needs has been the renovation of the 99-year-old Lincoln Elementary School. In the pictures below, you can clearly see the crumbling stairs and the chipping paint. What you can't see in these pictures is the decreased morale, the dwindling attitudes and the negative impact of the environment on test scores. We know these factors exist based on independent, academic research. This research has shown that physical elements



Figure 4: Stairwells will be repaired and repainted.

in the classroom improve comfort, well-being, attitude and academic achievement.¹ Building quality has been linked to higher test scores,² and capital investment has been linked to academic achievement, teacher motivation, school leadership, and student time spent on learning³.

FUNDING SOURCES

We are seeking funding from a number of private donors and organizations in the community. Here is a summary of funding sources that have been currently committed (additional funding is expected from private donors and organizations):

Private Donors	\$7,000
Community Non Profits	\$5,000
Corporations	\$3,000
In-Kind Donations	\$4,602
Grace Church Operating Budget	\$20,000

TARGET AUDIENCE

The following individuals/groups will benefit from this project:

The students of Lincoln Elementary – These 500 students will experience the largest benefit from this project through a more updated school, increased morale and sense of pride and improved attitude.

The teachers of Lincoln Elementary – The teachers at Lincoln Elementary have been purchasing supplies for their students due to a lack of budget and families who are financially unable to provide them. The donations of school supplies will meet this need. Further, like the students, the renovations will provide an improvement in attitude and morale and subsequently may provide benefits in terms of retention.

Erie’s Public Schools – This project alleviates costs that the struggling school district would otherwise need to expend or forgo. This project also hopes to strengthen the relationship between ServErie and Erie’s Public Schools to develop a model where the community assists the school district in a more long-term way.

The families of Lincoln Elementary – Similar to the students and employees of Lincoln School, the families will feel pride in their school. The contribution of school supplies will also alleviate financial burdens on the families.

The community surrounding Lincoln Elementary – Neighbors have indicated that the school has been an eye sore to the community. They take pride in their school and want the aesthetics to be improved. Additionally, when potential homeowners are looking to move into an area, one of the first things they look at is the schools in the area – improving the aesthetics of the school may also assist in selling homes in the area and act as a boost to the economy.

¹ (Hannah, 2013)

² (Plumley, 1978; Edwards, 1992; Cash, 1993; Earthman and Lemasters, 1998; Hines, 1996)

³ (PricewaterhouseCooper, 2001)

BUDGET

Total Project Cost:	\$86,991
Total Grant Request:	\$20,000
ServErie Match:	\$20,000
Donations:	\$46,991

Depending on the securing of funding, the scope of the project may be revised. This is indicated by priority and secondary projects listed on the detailed project budget in Appendix B.

LONG-TERM PLAN

ServErie plans to continue these school projects into the future and has, with Dr. Badams, identified four schools that are on the Erie's Public Schools' optimization plan such as Central Tech/Roosevelt Elementary and Edison Elementary School. ServErie plans to partner in a similar way with Erie's Public Schools to provide assistance to these four schools over the next four years (one per year).

ServErie plans to leverage the template provided by other faith-based groups that partner with schools, like Life Remodeled, which focuses on improving one Detroit neighborhood or school each year. Last August, Life Remodeled received the help of 10,000 volunteers to renovate an inner-city high school surrounded by high crime, blight and poverty.

PROJECT PARTNERS

The list of project partners continues to grow and will grow until the day of the event. As of June 15, 2016, this is the list of partners who have either lent their expertise and skill, volunteers, in-kind donations or volunteers:

- Alex Roofing
- Bonnell's Collision
- Bush Masonry Contractor
- Dailey's Concrete Services
- Erie's Public Schools
- Maleno Development
- Sam Catania Painting Contractor
- Schillings Carpet

For a detailed list of volunteer partners, please see Appendix C.

EVIDENCE OF SUPPORT

Evidence of support can be seen by the list of partners. Additionally, a letter of support from Erie's Public Schools can be found in Appendix D.

QUALIFICATIONS AND EXPERIENCE

A precursor to ServErie was a Grace project in the late 1990s called Target. About 150 volunteers, a mix of contractors, plumbers, electricians and area students, would clean and repair homes in Erie's low-income neighborhoods. Target's projects would last one week in the summer with between 10 and 12 homes being rehabbed.

ServErie also played a large role in Extreme Makeover: Home Edition when it filmed in Erie in 2009. Grace Church gathered more than 500 volunteers to do smaller home improvement projects at 46 homes in the neighborhood around Clara Ward's house including renovating and designing new bedrooms for children Clara Ward was close to. Other work completed in the neighborhood included landscaping, painting and small construction projects.

As mentioned, ServErie has worked quarterly with over 50 local non-profits and hundreds of volunteers. In a single event in February 2016, ServErie had more than 450 volunteers from 30 local organizations.

Derek Sanford, lead pastor of Grace Church, has been intimately involved with ServErie since its inception. He provides the vision and necessary guidance to ensure the project meets the needs of the organization(s) being served and the community as a whole. Miriam Crossman has served as project coordinator since 2012. She knows the ins and outs of volunteer coordination, project management and day-of operations. She has successfully overseen more than 16 projects and thousands of volunteers in her four years. Grace Church's staff, along with a team of leaders from other local churches and organizations, also supports the effort including operational and organizational leadership, youth and kids leaders, communication and marketing leaders and teams, as well as support staff. An organizational chart of this ServErie project can be found in Appendix E and an organizational chart of Grace Church leadership can be found in Appendix F.

Additionally, the project pulls from local specialized contractors who lead volunteers on specialized projects such as construction, painting and flooring. For this particular project, the following specialized contractors will be providing services to the project:

- Alex Roofing
- Bush Masonry
- Dailey's Concrete Services
- Maleno Development
- Sam Catania Painting
- Shillings Carpet

TIMELINE

The full scope of the project will be completed by July 20, 2016, including cleanup of the project site. ServErie's ability to complete the project has been demonstrated by successful completion of ServErie Saturdays as well as the Extreme Makeover: Home Edition project, which compares to the scale of this project.

The bulk of the project will take place between July 1 and July 15, 2016. A detailed project timeline can be found in Appendix G.

EVALUATION

The projects will be evaluated through a number of lenses including:

Project Completion and Satisfaction. Was the project completed in its entirety and to the level of expectation of Erie's Public Schools. This will be measured through a walk through at the end of the project to compare the completed tasks with the intended project list as well as a follow up meeting with Dr. Badams and representatives of Erie's Public Schools.

Volunteers. We measure the number of volunteers to determine community impact and engagement. This number is gathered through our registration process as volunteers enter the worksite. This number will also be compared with future projects' volunteers numbers and to our previous project numbers.

Partners. We will aggregate the number and names of organizations in the community who had a hand in the project. This list is compared to previous and future projects to determine growth, reach and relationship building.

Economic Impact. Using the total number of dollars invested in the school from the completed projects budget, an estimated economic impact can be determined since this project is alleviating costs from the budget of Erie's Public Schools and the tax base.

Morale and Student Achievements. While there are formal methods to measure morale, this will be measured through anecdotes/conversations in the Lincoln School community. Erie's Public Schools measures more formal standards (i.e., test scores) but changes in these areas will be challenging to pin on the renovations. However, as previously noted, research has shown correlations so it can be assumed that an effect will be seen.

APPENDIX A: Lead-based Paint and Asbestos Letter



Dr. Jay D. Badams
Superintendent of Schools

Nancy Sadaly
Assistant Superintendent

Board of School Directors

Robert S. Casillo
President

Edward M. Brzezinski
Vice President

Linda Aleksandrowicz

Robbie Fabrizi

John C. Harkins

Angela McNair

Frank Petrungar, Jr.

Mary Frances Schenley

Thomas A. Spagel

Robin J. Smith
Secretary

June 17, 2016

Mr. Perry Wood
Executive Director
Erie County Gaming Revenue Authority
5340 Fryling Road, Suite 201
Erie, PA 16510

Dear Perry:

I am writing today to verify that my office and I are well aware of the Lincoln School project through ServErie. My office and the building engineer for Lincoln Elementary School, Jim Arble, have and will continue to be involved to ensure all lead and asbestos safety regulations and guidelines have been considered and met. I am the district's AHERA designated person and have been certified and enforce all aspects of the EPA and CDC's protocols and guidelines as they relate to asbestos and lead, including Asbestos Hazard Emergency Response Act (AHERA).

This current project will not disrupt any existing lead-based paint; all potential lead-based paint is and will remain encased throughout the duration of the project and no abatement is required. Likewise, this project will not require the intentional abatement or disruption of any areas that contain asbestos. We will follow proper guidelines to ensure unintentional disruption is prevented. We will continue to monitor the project throughout its duration to ensure all EPA and AHERA guidelines and protocols are adhered to. The asbestos documents are on file at Lincoln Elementary School and Erie's Public Schools district offices if further review is needed.

Please do not hesitate to contact me at 814-874-6000 or lganska@eriesd.org if you require additional information. Thank you for your assistance in this matter.

Sincerely,

Leroy Ganska
Chief Engineer

Erie's Public Schools
148 West 21st Street
Erie, PA 16502-2834
P: 814.874.6000
F: 814.874.6049
www.eriesd.org



Help Our Schools: The Lincoln School Project

THE WORK PROJECT

PRODUCT	Number Needed	DESCRIPTION	COST per item	TOTAL	DONATED / IN KIND
Paint	800 Gal		\$20/gal	\$16,000	
Drop Cloths	80	12/pack 6x9ft	8.98/pack	\$63	
Sash Brushes	100	4-in Natural Brushes	4.18/brush	\$418	
Roller Pans	200	Blue Hawk	3.68/tray	\$736	\$312.80
Roller Pan Liners	200	Blue Hawk	1.00/liner	\$200	\$85.00
Roller Frames 9 in.	150	Project Source	3.98/frame	\$597	
Roller Covers	500	Wool. Synth blend 6/pk	12.99/pack	\$1,104	
Buckets - Small	50	2.5 quart	2.35/bucket	\$125	
Buckets - Large	50	2 gallons	3.22/bucket	\$161	
Blue Masking Tape	60	6/pk	34.98/pack	\$350	
Dumpster	1		\$600	\$600	\$600.00
Polyurethane for Aud.seats	20 Gal	Clear Satin for furniture	\$49.97/gal	\$1,000	
Trash Bags	200	contractor's 50/count 42 Gal	\$25.98	\$104	\$104.00
Seat stripper	55 gal	includes shipping	\$50 per gal	\$3,000	
Topsoil		8 yds delivered		\$304	
Shade tolerant grass seed		2 bags		\$104	
Perennial plants		15 pots		\$225	
Neighborhood Landscaping/Projects				\$2,500 *	
Sidewalks				\$3,500	\$3,500.00
Parking Lot				\$20,000 *	
Exterior Sign				\$10,000 *	
Curtains				\$10,000 *	
WORK PROJECT TOTAL				\$71,091	\$4,601.80

* - Second tier project

MARKETING/ADVERTISING/PROMOTIONS					
Advertising				\$10,000	
T-Shirts				\$5,000	
Banners/signs				\$500	
Social Media Ads				\$200	
MARKETING ETC TOTAL				\$15,700	

EXPENSES TOTAL				\$86,791.00	
-----------------------	--	--	--	--------------------	--

CASH DONATIONS/OPERATING COSTS					
Grace/ServErie Operating Budget					\$20,000.00
Individual Donations					\$7,000.00
Community Non Profit Gifts/Grants					\$5,000.00
Corporate Donations					\$3,000.00
Inkind Donations (From Above)					\$4,601.80
DONATIONS TOTAL (as of June 17, 2016)					\$39,601.80

APPENDIX C: Lincoln School Project Partners



Lincoln Elementary School
831 E. 31st Street – Erie, PA

July 15-17, 2016

PARTNERS

ServErie Church & Group Partners

Asbury Methodist

Bethel Baptist Erie

C3 Church Harborcreek

Christ Community

Church of God - Erie

Church of the Cross

East Lake Rd Alliance

Elevate Church

Erie Christian Fellowship

Erie First

Erie Young Adults

Fairview Methodist

Faith Lutheran

Family Worship Center

Federated

First Alliance

First Methodist

First Presbyterian Harborcreek

First Presbyterian Waterford

Flagship

Flightpath

Glenwood Methodist

Grace Church

Lake Erie Christian Fellowship

Lake Pointe

Luther Memorial

McLane Church

Messiah Lutheran

Millcreek Community

New Apostolic

New Life and Revival Center

Our Lady of Mercy

Primera Iglacia Ebenezer Assembly of God

ReaLife Assembly of God

Russian Baptist

Sacred Heart

South Harborcreek UM

St Joseph/Bread of Life

St Jude

Summit UM

St Paul's Lutheran

Wayne Park

Wesleyville Baptist

Westminster Presbyterian

APPENDIX C: Lincoln School Project Partners



Lincoln Elementary School
831 E. 31st Street – Erie, PA
July 15-17, 2016

PARTNERS

Schools

Edinboro University

Erie Home Schoolers

Gannon University

LECOM

Mercyhurst University

Penn State - The Behrend College

PIA Academy

Seneca Service Club

Villa Maria

YFC

Employees Groups

Bonnell's Auto Group

Starbucks

TCS

APPENDIX D: Lincoln School Project Letter of Support



Dr. Jay D. Badams
Superintendent of Schools

Nancy Sadaly
Assistant Superintendent

Board of School Directors

Robert S. Casillo
President

Edward M. Brzezinski
Vice President

Linda Aleksandrowicz
Robbie Fabrizi

John C. Harkins
Angela McNair

Frank Petrunigar, Jr.
Mary Frances Schenley

Thomas A. Spagel

Robin J. Smith
Secretary

June 14, 2016

Mr. Perry Wood
Executive Director
Erie County Gaming Revenue Authority
5340 Fryling Road, Suite 201
Erie, PA 16510

Dear Perry:

I am writing in support of a funding request submitted by ServErie for the "Help Our Schools" project that they are undertaking this summer. Erie's Public Schools is immensely grateful for the work that ServErie is organizing through this initiative at Lincoln Elementary School.

As has been well documented, the financial crisis currently facing the district has left many of our buildings in disrepair. ServErie's volunteer efforts at Lincoln this summer will ensure that over 500 students and teachers return in August to an updated and repaired school building, which would simply not be possible without their efforts.

Please do not hesitate to contact me at 814-874-6000 or jbadams@eriesd.org if you require additional information. Thank you for your assistance in this matter.

Sincerely,

Dr. Jay D. Badams
Superintendent of School

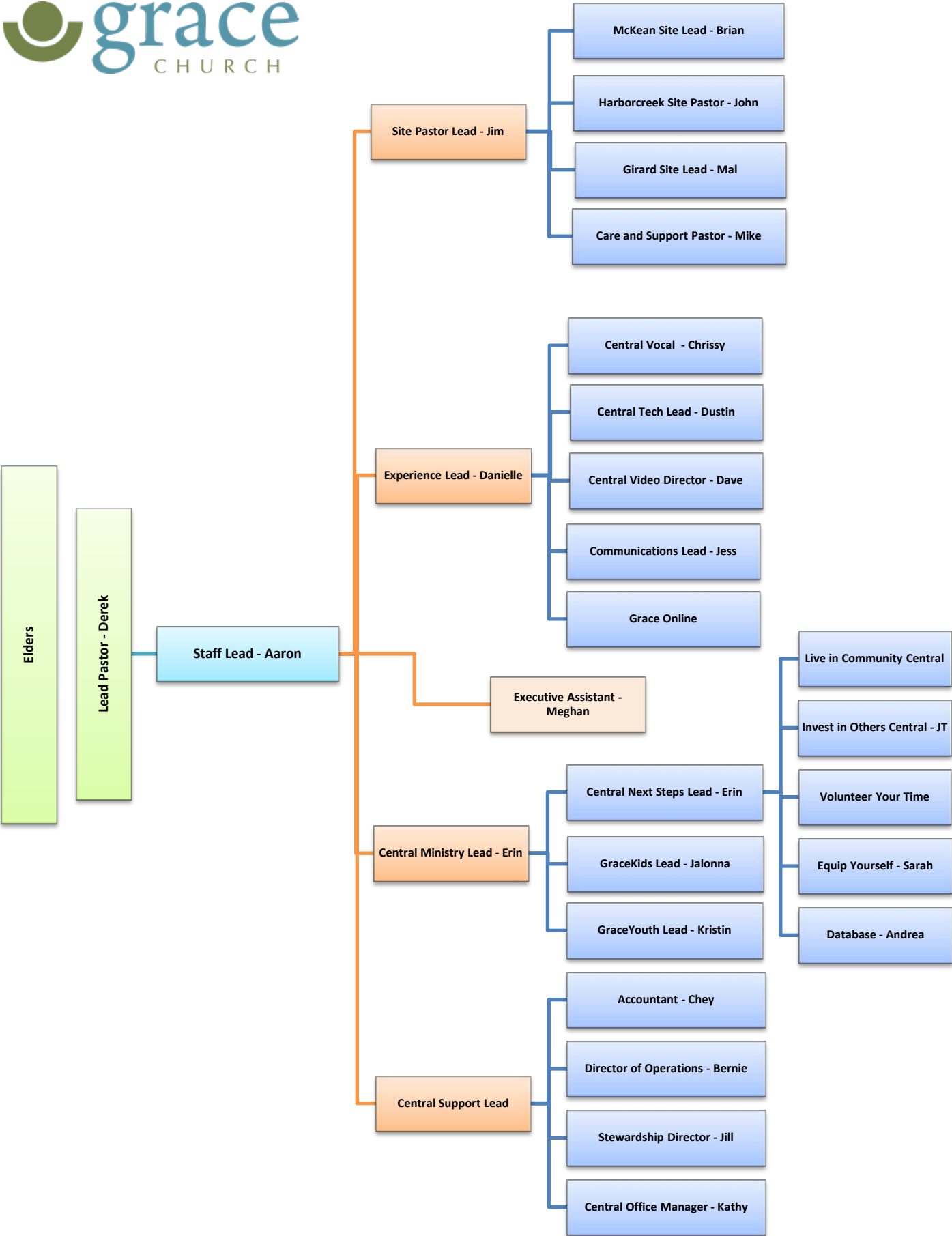
Erie's Public Schools
148 West 21st Street
Erie, PA 16502-2834
P: 814.874.6000
F: 814.874.6049
www.eriesd.org

APPENDIX E : ServErie- Help Our Schools Organization Chart



Derek
Miriam
Lisa

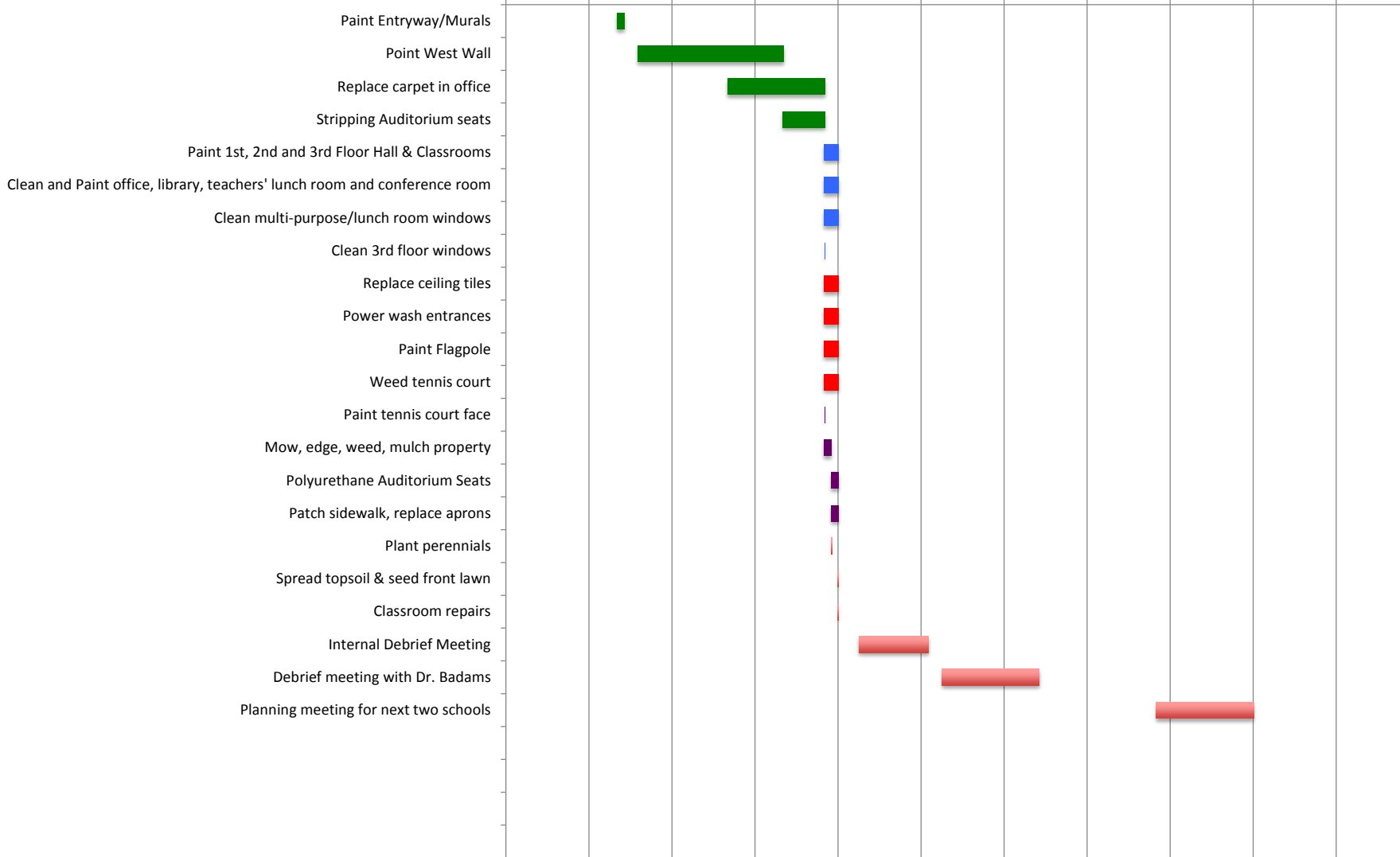
APPENDIX F: Organizational Chart Grace Church



APPENDIX G: Timeline

ServErie Timeline - Help Our Schools: Lincoln School Project

5/30/2016 6/11/2016 6/23/2016 7/5/2016 7/17/2016 7/29/2016 8/10/2016 8/22/2016 9/3/2016 9/15/2016 9/27/2016



APPENDIX G: Timeline

ServErie Timeline - Help Our Schools: Lincoln School Project

Task Name	Start	End
Paint and Repair 4 Stairwells	6/15/2016	7/9/2016
Paint Entryway/Murals	6/15/2016	6/16/2016
Point West Wall	6/18/2016	7/9/2016
Replace carpet in office	7/1/2016	7/15/2016
Stripping Auditorium seats	7/9/2016	7/15/2016
Paint 1st, 2nd and 3rd Floor Hall & Classrooms	7/15/2016	7/17/2016
Clean and Paint office, library, teachers' lunch room and conference room	7/15/2016	7/17/2016
Clean multi-purpose/lunch room windows	7/15/2016	7/17/2016
Clean 3rd floor windows	7/15/2016	7/15/2016
Replace ceiling tiles	7/15/2016	7/17/2016
Power wash entrances	7/15/2016	7/17/2016
Paint Flagpole	7/15/2016	7/17/2016
Weed tennis court	7/15/2016	7/17/2016
Paint tennis court face	7/15/2016	7/15/2016
Mow, edge, weed, mulch property	7/15/2016	7/16/2016
Polyurethane Auditorium Seats	7/16/2016	7/17/2016
Patch sidewalk, replace aprons	7/16/2016	7/17/2016
Plant perennials	7/16/2016	7/16/2016
Spread topsoil & seed front lawn	7/17/2016	7/17/2016
Classroom repairs	7/17/2016	7/17/2016
Internal Debrief Meeting	7/20/2016	7/30/2016
Debrief meeting with Dr. Badams	8/1/2016	8/15/2016
Planning meeting for next two schools	9/1/2016	9/15/2016